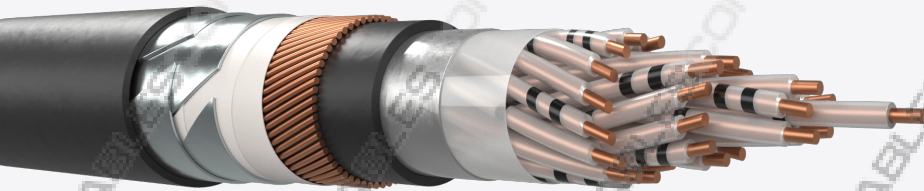


Cable AJ-2YOF(L)2YDB2Y_H115-H145 RK400

RAILWAY SIGNALLING CABLES, MULTICORE, PE SHEATH FOR EXTERNAL INSTALLATIONS WATERBLOCKING AND RODENT RESISTANT



Description and application

Cables from 1 to 200 conductors of 0.9, 1.4 and 1.8 mm, polyethylene insulated. Conductors are stranded in layers to form the core which is filled with a low dielectric compound to prevent water penetration and then is protected by an anti-inductive (L)2YDB2Y sheath with reduction factor according to customer's requirements. They are used as control cables up to 100 Hz signals, especially in rail infrastructures, when protection is required against the induction of high voltage lines. For installation in ducts or directly buried. The cable is rodent resistant. Generally according to DB AG 416.0116 and DB AG 416.0113

They are used as control cables up to 100 Hz signals, especially in rail infrastructures, when protection is required against the induction of high voltage lines. For installation in ducts or directly buried.

Construction

- Conductors: Annealed copper solid wire, 0.9, 1.4 and 1.8 mm diameter.
- Insulation: Solid polyethylene. (2Y)
- Cabling element: Conductors.
- Core filling: Flooded with low dielectric factor compound to make the cable waterproof. (OF)
- Core formation: Stranded in concentric layers.
- Moisture barrier: Aluminium tape bonded to the inner sheath.(L)
- Inner sheath: PE sheath. (2Y)
- Screening: Layer of copper wires (Ø0,9/1,2/1,4/1,8 mm). (D)
- Armouring: Two helically applied steel tapes (0,5/0,8 mm thickness). (B)

- Outer sheath: UV resistant black polyethylene. (2Y)
- Sheath marks: The sheath shall be marked, at regular intervals with the following information:
 - SIGNAL / AJ-2YOF(L)2YDB2Y / Capacitance / Manufacturer / Length marks
 - Other type of marks according to the customer

ELECTRICAL CHARACTERISTICS (20°C)

	0.9	1.4	1.8
Maximum resistance (Ω/km)	≤ 28.9	≤ 11.9	≤ 7.2
Minimum insulation resistance (MΩxkm, 20°C, 500V)	≥1500	≥1500	≥1500
Mutual capacity (nF/km, 800 Hz)	≤115	≤145	≤145
Dielectric strength (Vdc, 2min) Conductor - Conductor	3500	3500	3500
Dielectric strength (Vdc, 2min) Conductor - Screen			
AS/DC operating voltage (V)			

MECHANICAL AND THERMAL PROPERTIES

Maximum allowable radius	Installation 20 x Ø cable Operation 15 x Ø cable
Operating temperature range	-40° C to +60° C
Installation temperature range	-10° C to +60° C

DIMENSIONS AND WEIGHTS

Cable AJ-2YOF(L)2YDB2Y_H115-H145 RK400 x 0.9

Number of conductors	Nominal Weight (kg/km)	Nominal OD (mm)
2x1	620	15,8
4x1	682	16,6
7x1	757	17,6
10x1	861	19,4
12x1	896	19,7
14x1	927	20,2
20x1	1024	21,2
24x1	1160	23
30x1	1241	23,8
40x1	1367	24,8
50x1	1578	27,4
60x1	1815	30,2
80x1	2117	33
100x1	2317	34
120x1	2637	37,1

Cable AJ-2YOF(L)2YDB2Y_H115-H145 RK400 x 1.4

Number of conductors	Nominal Weight (kg/km)	Nominal OD (mm)
2x1	707	17,2
4x1	797	18,3
7x1	924	19,7
10x1	1105	22,2
12x1	1171	22,6

14x1	1229	23,3
20x1	1407	24,7
24x1	1609	27,2
30x1	1766	28,5
40x1	2078	31,3
50x1	2460	34,9
60x1	2728	36,7
80x1	3277	40,3

Cable AJ-2YOF(L)2YDB2Y_H115-H145 RK400 x 1.8

Number of conductors	Nominal Weight (kg/km)	Nominal OD (mm)
2x1	789	18,4
4x1	917	19,7
7x1	1080	21,5
10x1	1346	24,6
14x1	1519	25,9
20x1	1782	27,9
24x1	2135	32,4
30x1	2366	33,7
40x1	2722	35,5
50x1	3249	39,9
80x1	4512	46,9