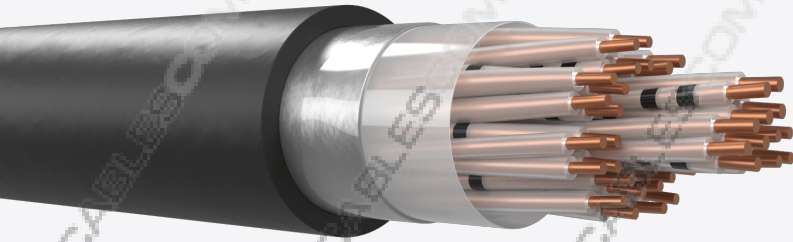


## Cable A-2Y(L)2YV\_H45

RAILWAY SIGNALLING CABLES, MULTICORE, PE SHEATH FOR EXTERNAL INSTALLATIONS WATERBLOCKING AND RODENT RESISTANT



### Description and application

Cables from 1 to 40 quads of 0.9 or 1.4 mm, polyethylene insulated. Quads are stranded in layers to form the core which is protected by a 2YV sheath. They are used as control cables up to 90 kHz signals, especially in rail infrastructures laid in ducts. Generally according to DB AG 416.0116 and DB AG 416.0115

They are used as control cables up to 90 kHz signals, especially in rail infrastructures laid in ducts.

### Construction

- Conductors: Annealed copper solid wire, 0.9 or 1.4 mm. diameter.
- Insulation: Solid polyethylene. (2Y)
- Cabling element: quads and 2 stranded perforated sheathing conductors ( $\geq 7$  quads) to detect water presence. Identification according to DB AG 416.0116
- Core formation: Stranded in Layers.
- Screen and moisture barrier: Aluminium tape. (L)
- Outer sheath: UV resistant black reinforced sheath of polyethylene. (2YV)
- Sheath marks: The sheath shall be marked, at regular intervals with the following information:
  - SIGNAL / A-2Y(L)2YV / Capacitance / Manufacturer / Length marks
  - Other type of marks according to the customer

## ELECTRICAL CHARACTERISTICS (20°C)

	0.9	1.4
Maximum resistance (Ω/km)	≤ 56.9	≤ 23.4
Minimum insulation resistance (MΩxkm, 20°C, 500V)	≥ 10000	≥ 10000
Mutual capacity (nF/km, 800 Hz)	≤ 45	≤ 45
Dielectric strength (Vdc, 2min) Conductor - Conductor	≥ 2500	≥ 2500
Dielectric strength (Vdc, 2min) Conductor - Screen	≥ 2500	≥ 2500
AS/DC operating voltage (V)		

## MECHANICAL AND THERMAL PROPERTIES

Maximum allowable radius	
Operating temperature range	
Installation temperature range	

## DIMENSIONS AND WEIGHTS

### Cable A-2Y(L)2YV\_H45 x 0.9

Number of conductors	Nominal Weight (kg/km)	Nominal OD (mm)
1x4	90	10.00
3x4	190	15.00
5x4	270	17.40
7x4	345	18.70
10x4	475	23.20
14x4	611	25.10
20x4	815	27.60
40x4	1515	36.70

### Cable A-2Y(L)2YV\_H45 x 1.4

Number of conductors	Nominal Weight (kg/km)	Nominal OD (mm)
1x4	145	11.90
3x4	345	19.20
5x4	512	22.60
7x4	680	24.70
10x4	961	31.40
14x4	1267	34.00